

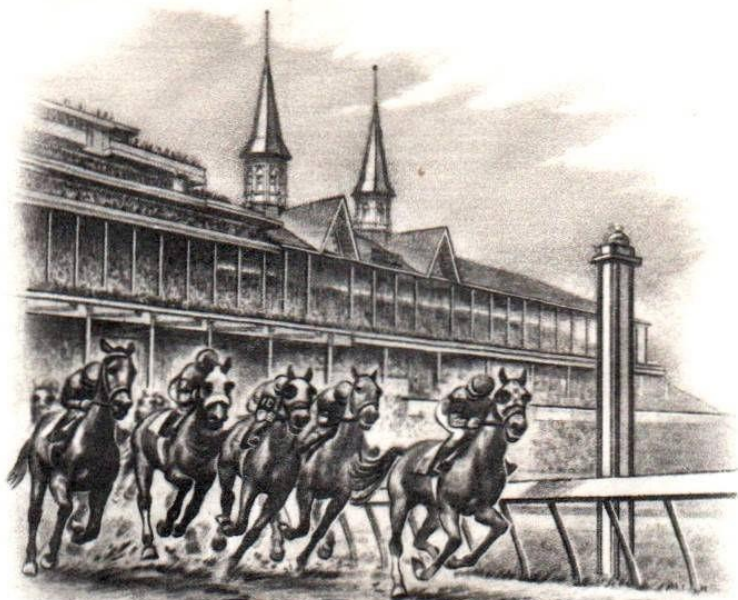
# *HORSE RACING*



*ON STAMPS*

# 1974: 100<sup>th</sup> Running of the Kentucky Derby

OFFICIAL  
FIRST DAY OF ISSUE



CHURCHILL DOWNS  
LOUISVILLE, KENTUCKY

100<sup>TH</sup> RUNNING  
*Kentucky Derby*



1974



FIRST DAY OF ISSUE

# 1974: 100<sup>th</sup> Running of the Kentucky Derby



# 1999: Celebrating the 20<sup>th</sup> Century: 1970s

Official First Day Of Issue



**SECRETARIAT WINS TRIPLE CROWN  
1973**



*Celebrating  
the 20<sup>th</sup> Century  
1970-1979*



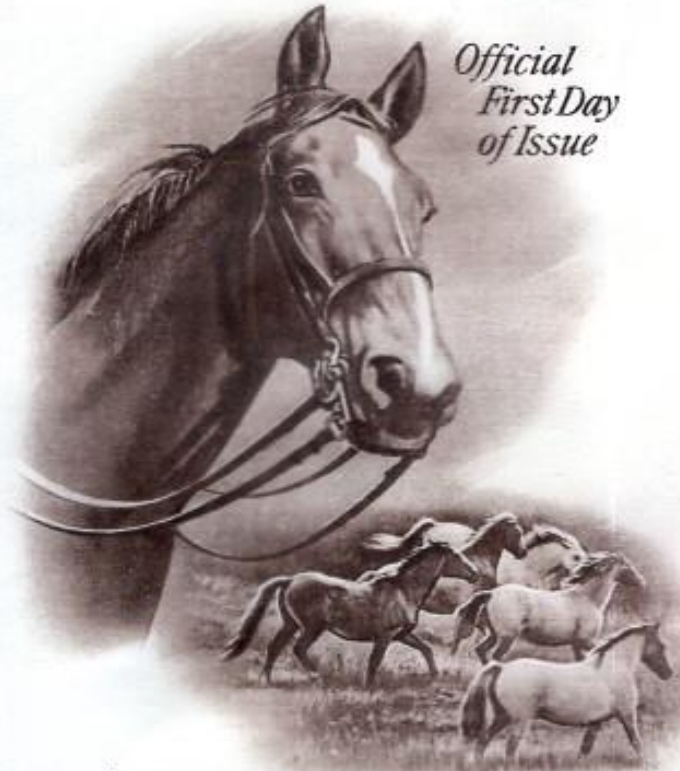
**FIRST DAY  
OF ISSUE  
1970s**



*1999: Celebrating the 20<sup>th</sup> Century: 1970s*



# 1985: Horse Breeds



Official  
First Day  
of Issue

## American Horses

APPALOOSA · MORGAN  
QUARTER · SADDLEBRED



1985



USA 22  
Quarter horse

USA 22  
Morgan

USA 22  
Saddlebred

USA 22  
Appaloosa

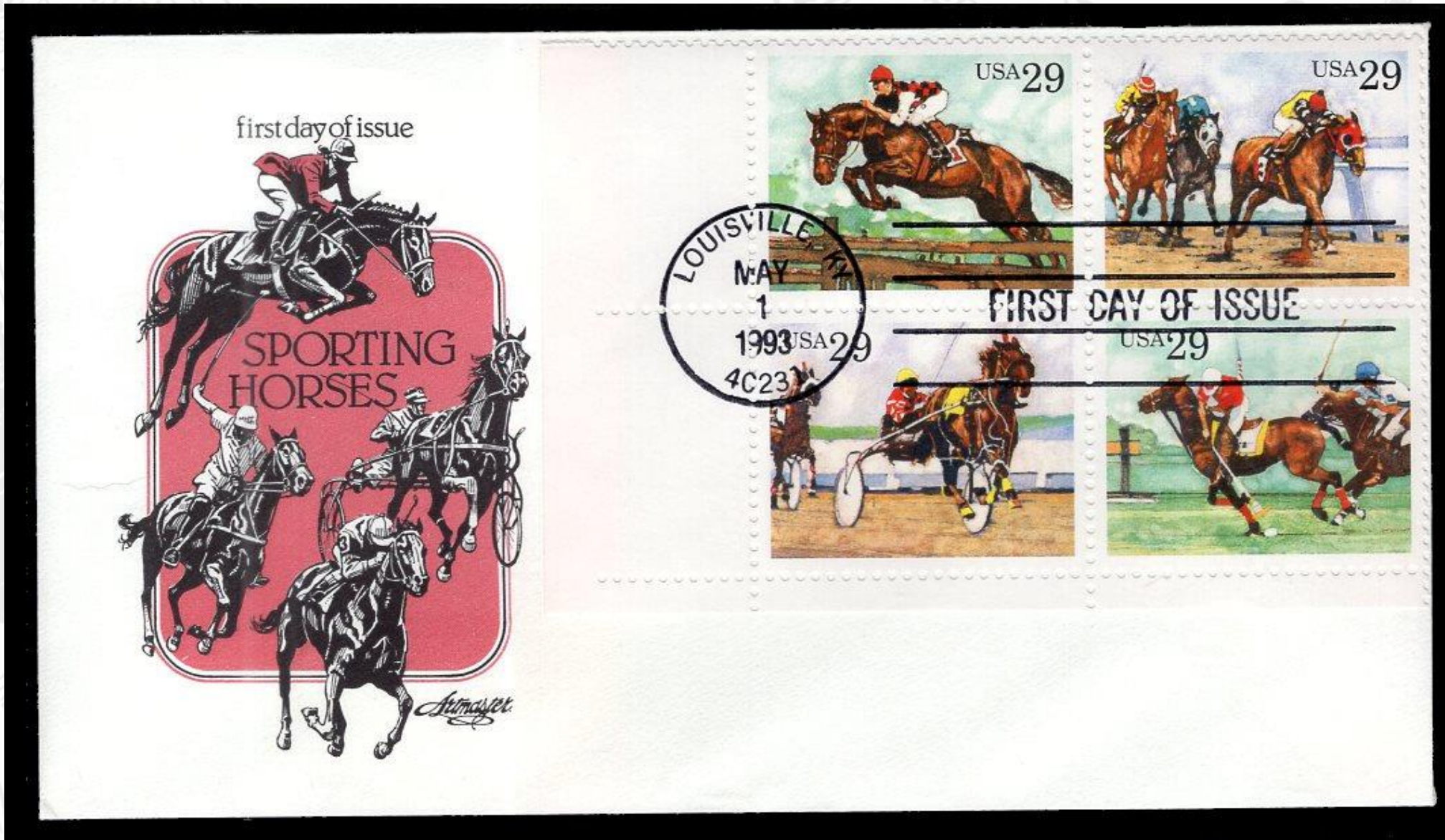
FIRST-DAY-OF-ISSUE

# 1985: Horse Breeds



Method of  
Mounting

# 1993: Sporting Horses



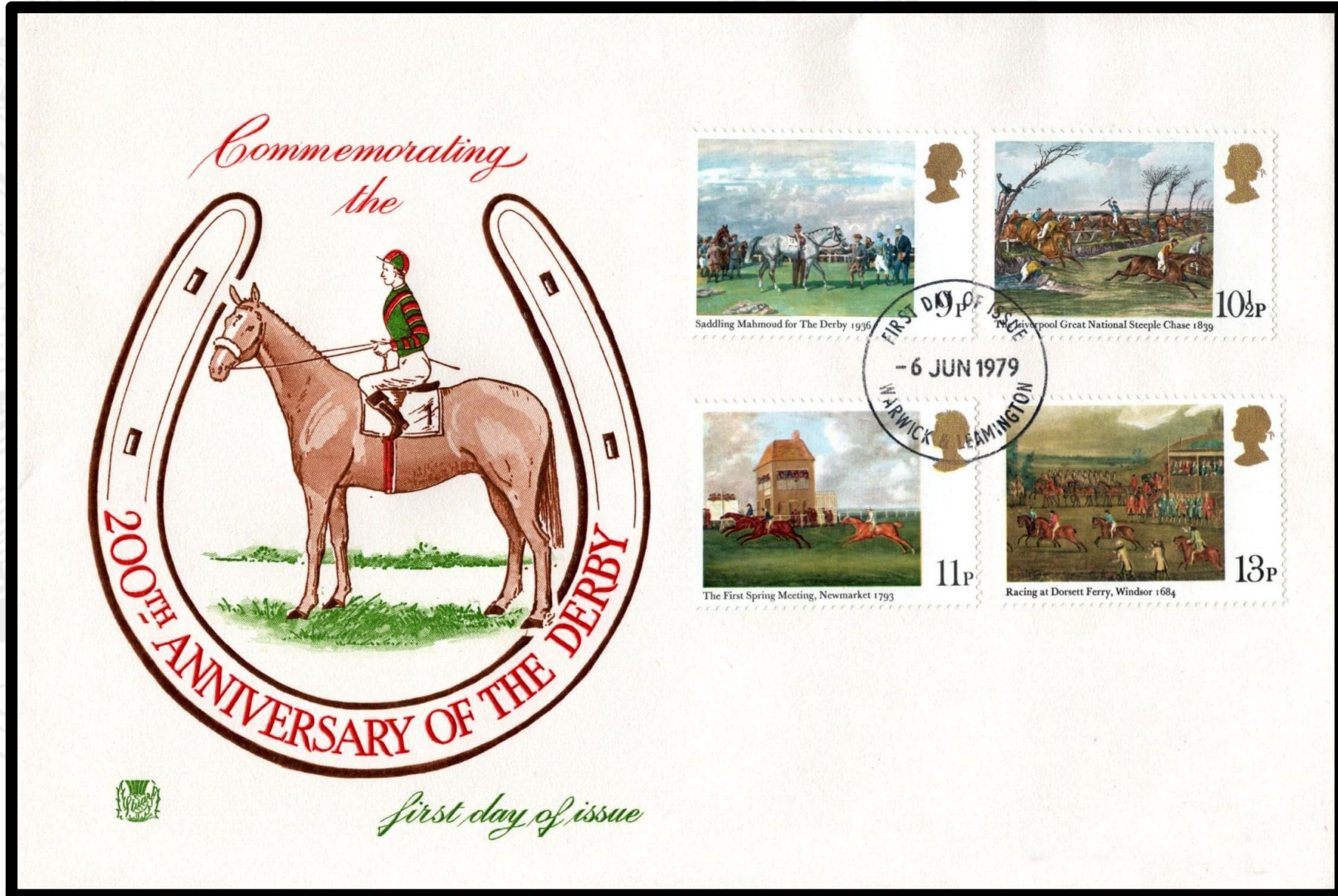


# 1993: Sporting Horses

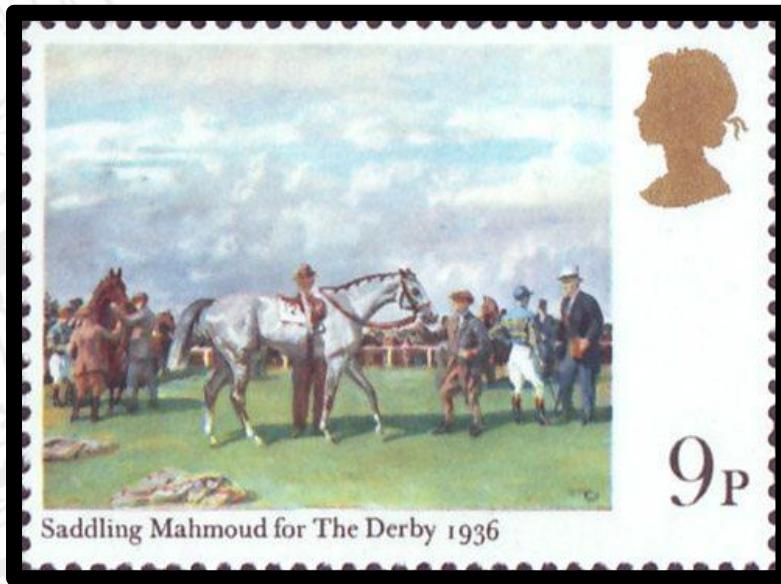


Method of Mounting

# GB 1979: 200<sup>th</sup> Anniversary of the (Epsom) Derby



# GB 1979: 200<sup>th</sup> Anniversary of the (Epsom) Derby



# Australia 2010: 150<sup>th</sup> Anniversary of the Melbourne Cup

150TH



MELBOURNE CUP



# Australia 2010: 150<sup>th</sup> Anniversary of the Melbourne Cup



# *First Horseracing Stamp?*



Method of  
Mounting